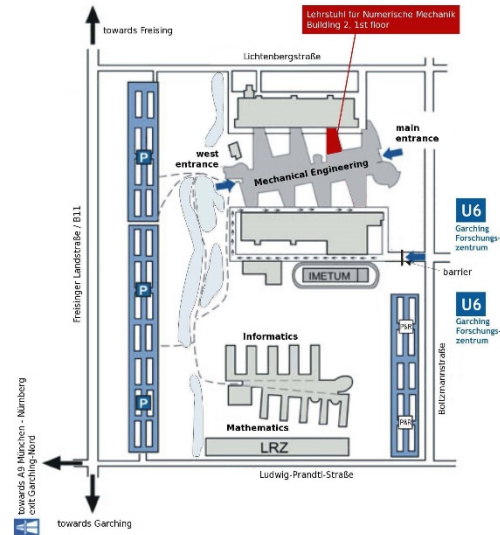


# How to find your way to the German-Japanese Workshop 2015

Lehrstuhl für Numerische Mechanik  
 (Institute for Computational Mechanics) ■  
 Fakultät für Maschinenwesen  
 (Faculty of Mechanical Engineering)  
 Technische Universität München  
**Boltzmannstraße 15**  
 Gebäude 2, 1. Stock (Building 2, 1. floor)  
**D-85747 Garching b. München**  
 Tel.: +49 (0) 89 289 15300  
 Fax: +49 (0) 89 289 15301  
 Internet: <http://www.inm.mw.tum.de>



## How to reach us ...

... **by car** Leave the *Autobahn 9* (highway A9) on exit *Garching Nord* and then drive directly to the Garching campus following the signs towards *Forschungsinstitute* (Research campus).

The Faculty of Mechanical Engineering is at *Boltzmannstraße*.

There are no public parkings in front of the building.

Large parking areas are available around the campus in the area of *Ludwig-Prandtl-Straße* and *Lichtenbergstraße*.

... **by train** From *Hauptbahnhof* (main station) with any *S-Bahn* (sub-urban train) eastbound service to *Marienplatz*; this are 2 stops. Change at *Marienplatz* to U6 service terminating at *Garching-Forschungszentrum* (Garching science centre), directly at the TUM campus *Boltzmannstraße*.

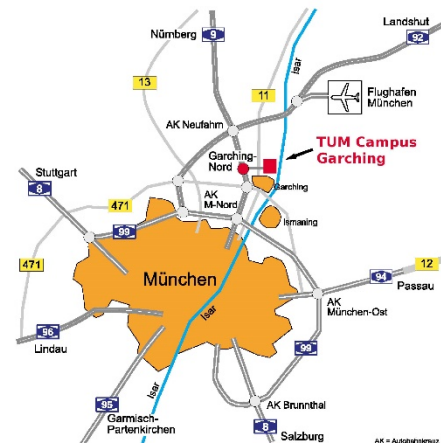
Travel time about 35–40 min.  
 Travel fees: One way to Garching is either a zone 2 ticket or 4 stripes of a stripe card.

... **by airplane** Either take a taxi (travel time ca. 20min) or the *S-Bahn* (sub-urban train) S1 towards city centre. Leave S1 at 2nd stop in *Neufahrn*. Take the bus 690 towards *Garching, Technische Universität* and leave it at stop *Garching, Forschungszentrum*

(Garching science centre), directly at the TUM campus *Boltzmannstraße*.

Travel time ca. 30–40 min

Travel fees: One way to Garching is either a zone 3 ticket or 6 stripes of a stripe card.



## From the workshop hotel "König Ludwig II"

The subway stop "Garching" (line U6) is just 100 meters away from the workshop hotel. From there, take the line U6 to "Garching-Forschungszentrum". It is just one stop. When taking the front exit, you will arrive right in front of the main building of the Faculty of Mechanical Engineering.

## Further directions inside the building

Having entered the building, you will find yourself in the first courtyard of a kind of mall. You just continue walking along the mall to the next courtyard on the right-hand side (building #2). Please enter this building and go up to the first floor. Here you are.